

758 - Texas State University System

Workforce Summary Document Prepared by the State Auditor's Office.
Based on a review of information self-reported by the institution, the following items are worth noting.

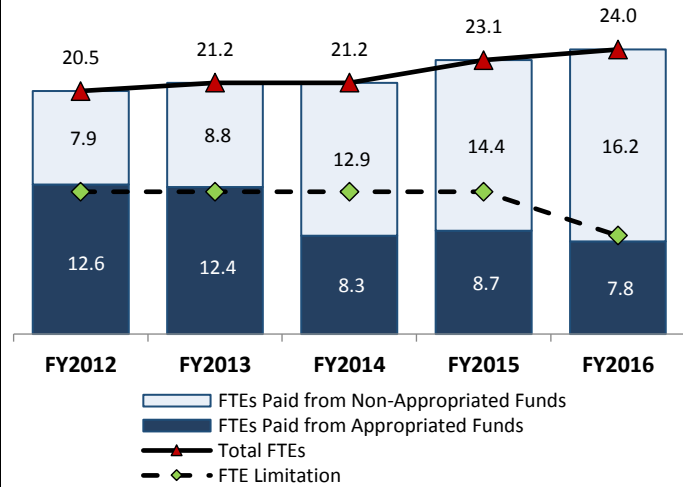
Full-Time Equivalent (FTE) Employees

The institution's full-time equivalent (FTE) employee limitation decreased by 30.8 percent to 8.3 FTEs in fiscal year 2016 compared to fiscal year 2015. As of August 31, 2016, 17.0 FTEs were administrator positions. The institution's 24.0 total FTEs represents an increase of 3.5 (17.1 percent) in the total number of FTEs since fiscal year 2012.

In fiscal year 2016, 67.5 percent of FTEs were paid from non-appropriated funds. This is an increase of 105.1 percent in FTEs paid from non-appropriated funds since fiscal year 2012. Only FTEs paid from appropriated funds count against the FTE limitation.

FTEs Below/Above FTE Limitation

	FY2012	FY2013	FY2014	FY2015	FY2016
FTE Limitation	12.0	12.0	12.0	12.0	8.3
Number Below or Above Limitation	+0.6	+0.4	-3.7	-3.3	-0.5
Percent Below or Above Limitation	+5.0%	+3.3%	-30.8%	-27.5%	-6.0%

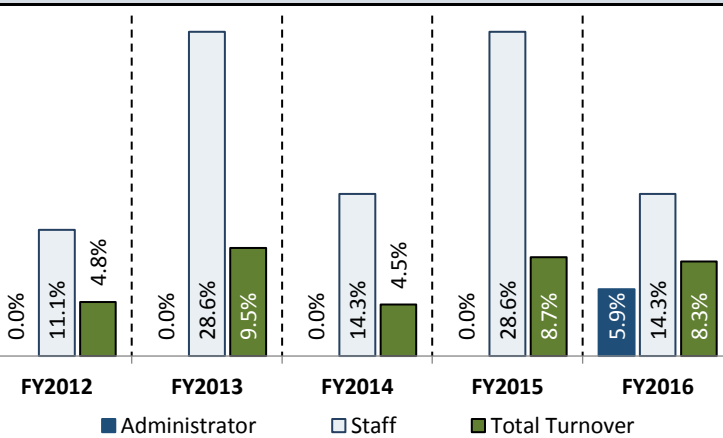


Source: State Auditor's Office Full-time Equivalent State Employment System.

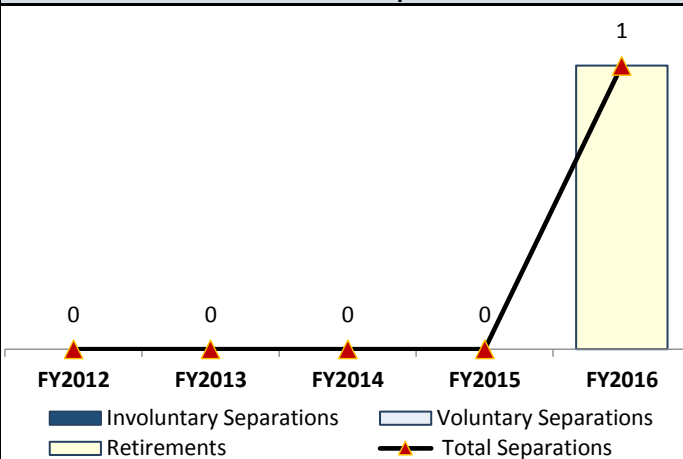
Employee Turnover ^a

In fiscal year 2016, the total turnover rate for the institution was 8.3 percent. This was lower than in fiscal year 2015, when the total turnover rate was 8.7 percent. The turnover rate in fiscal year 2016 for administrators (5.9 percent) was higher than in fiscal year 2015 and turnover for staff positions (14.3 percent) was lower than in fiscal year 2015.

Turnover Rates



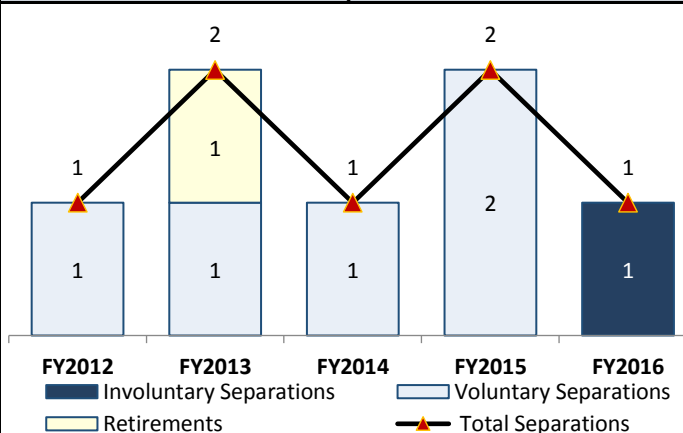
Administrator Separations



Faculty Separations

The Texas State University System Office Does Not Employ Faculty Positions

Staff Separations



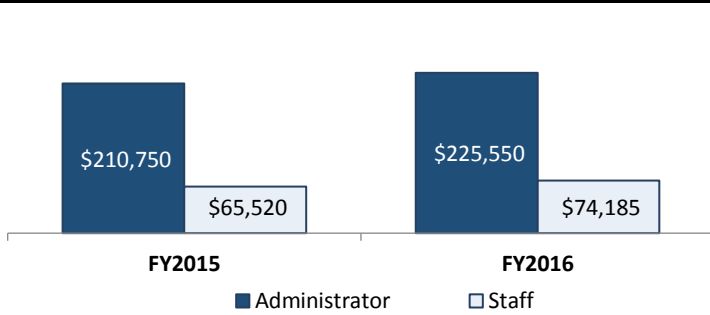
^a Turnover information is self-reported by the institution. Administrator positions include officials holding titles such as president, vice president, chancellor, associate chancellor, assistant chancellor, dean, associate dean, assistant dean, and positions with similar responsibilities. Staff positions include only non-faculty employees who worked at least 20 hours per week for at least 4.5 months.

Compensation Information ^b

The average salary for staff employees increased by 13.2 percent and for administrators it increased by 7.0 percent when compared to the average salaries in fiscal year 2015. Compared to fiscal year 2012, salary and benefits expenditures decreased by 16.7 percent.

In fiscal year 2016, the chancellor's salary was \$520,000. This salary increased from fiscal year 2015, when the chancellor's salary was \$500,000.

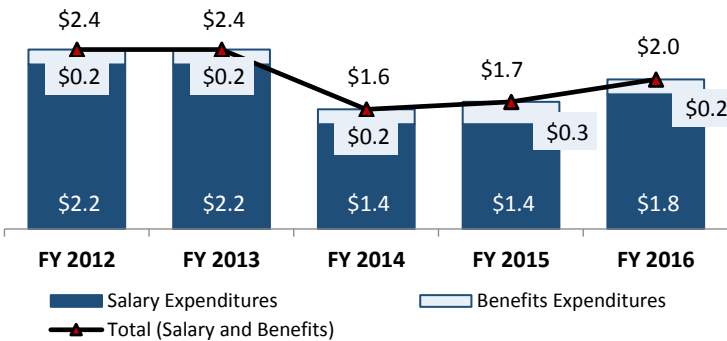
Administrator and Staff Average Salaries



Faculty Average Salary

**The Texas State University System Office
Does Not Employ Faculty Positions**

Salary and Benefits Expenditures (in Millions) ^c (Includes Only Appropriated Funds)



Number and Dollars Spent on Merit Increases

	Fiscal Year 2015		Fiscal Year 2016	
	Number of Merits	Dollars Spent	Number of Merits	Dollars Spent
Administrator	0	\$ 0	0	\$ 0
Faculty	Not Applicable			
Staff	0	\$ 0	0	\$ 0
Totals	0	\$ 0	0	\$ 0

In fiscal year 2016, the institution did not award any administrator or staff merit increases.

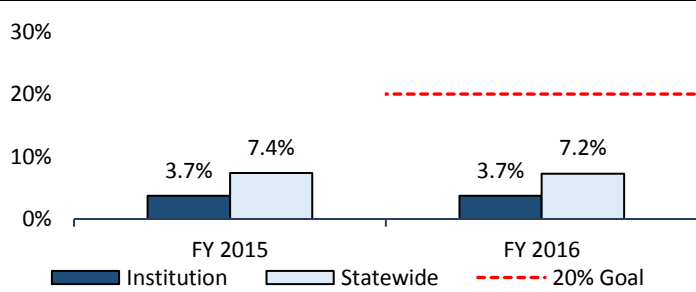
Fiscal Year 2016 Workforce Demographics and Veteran Workforce Analysis ^{b d}

Of the institution's administrators, 94.1 percent were 40 years of age or older, and of the institution's staff employees, 57.1 percent were 40 years of age or older. The average length of employment at the institution for administrators was 8.0 years, and for staff employees it was 5.0 years.

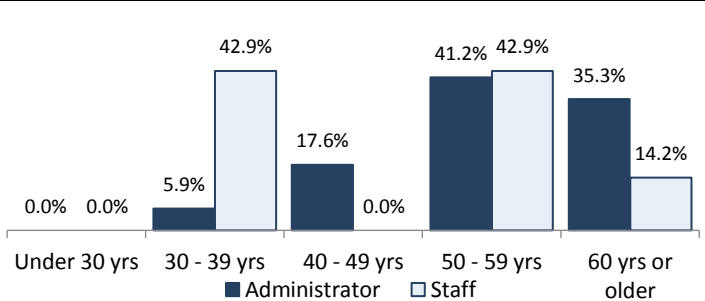
Senate Bill 805 (84th Legislature) amended Texas Government Code, Section 657.004, to set a goal for higher education institutions of employing veterans in full-time positions equal to at least 20.0 percent of the total number of institution employees effective September 1, 2015.

In fiscal year 2016, the institution's total percentage of veterans employed is lower than the state average and has remained the same since fiscal year 2015.

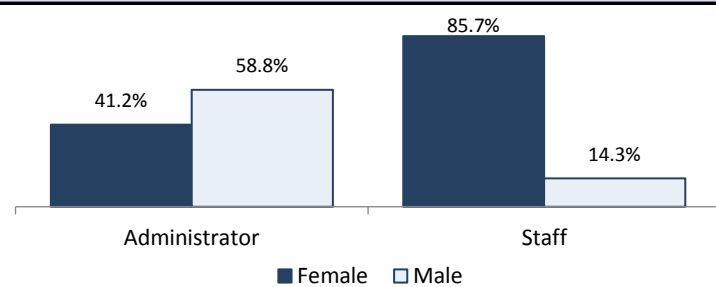
Veteran Employment



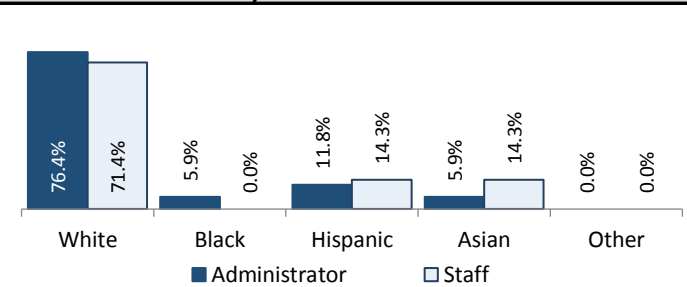
Age: Administrator and Staff



Gender: Administrator and Staff



Ethnicity: Administrator and Staff



^b Administrator and staff data is self-reported by the institution. Administrator positions include officials holding titles such as president, vice president, chancellor, associate or assistant chancellor, dean, associate or assistant dean, and positions with similar responsibilities. Staff positions include only non-faculty employees who worked at least 20 hours per week for at least 4.5 months.

^c According to the institution, fiscal year 2015 benefits expenditures included a reimbursement of funds it received for fiscal years 2013 and 2014 related to benefits proportionality, in accordance with the General Appropriations Act (84th Legislature), Rider 8, Page III-41. The institution's net benefits expenditures in fiscal year 2015 was -\$130,434; the institution expended \$276,657 in benefits and was reimbursed \$407,092.

^d Information on veteran employment was obtained from the Comptroller of Public Accounts. Statewide totals include state agencies and higher education institutions.