

716 - Texas A&M Engineering Extension Service

Workforce Summary Document Prepared by the State Auditor's Office.
Based on a review of information self-reported by the institution, the following items are noteworthy.

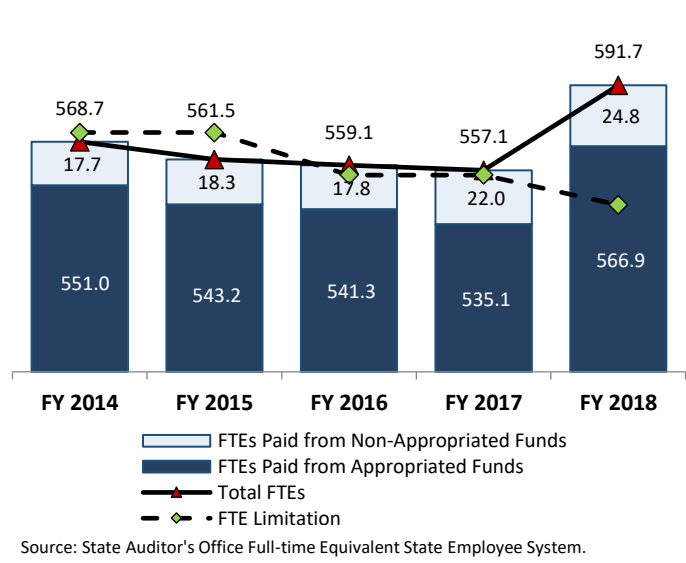
Full-Time Equivalent (FTE) Employees

The institution's full-time equivalent (FTE) employee limitation decreased by 2.2 percent to 543.0 FTEs in fiscal year 2018 compared to fiscal year 2017 (see table below). As of August 31, 2018, 6.3 FTEs were administrator positions. The institution's 591.7 total FTEs represents an increase of 23.0 (4.0 percent) in the total number of FTEs since fiscal year 2014.

In fiscal year 2018, 4.2 percent of FTEs were paid from non-appropriated funds. This was an increase of 40.1 percent in FTEs paid from non-appropriated funds since fiscal year 2014 (see bar chart to the right). Only FTEs paid from appropriated funds counted against the FTE limitation.

FTEs Below/Above FTE Limitation

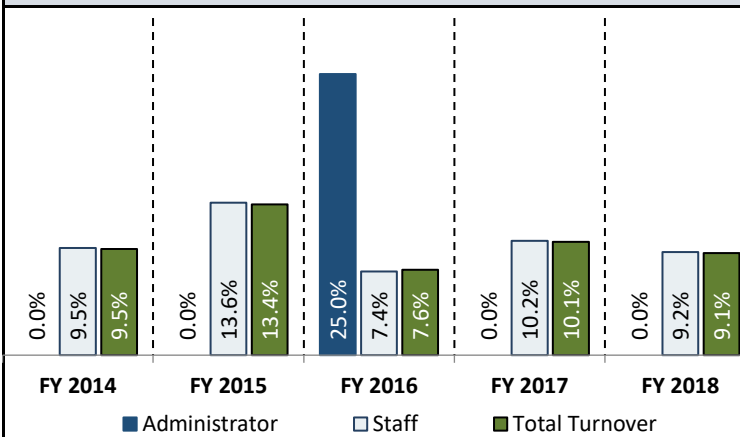
	FY 2014	FY 2015	FY 2016	FY 2017	FY 2018
FTE Limitation	572.5	572.5	555.2	555.2	543.0
Number Below or Above Limitation	-21.5	-29.3	-13.9	-20.1	+23.9
Percent Below or Above Limitation	-3.8%	-5.1%	-2.5%	-3.6%	+4.4%



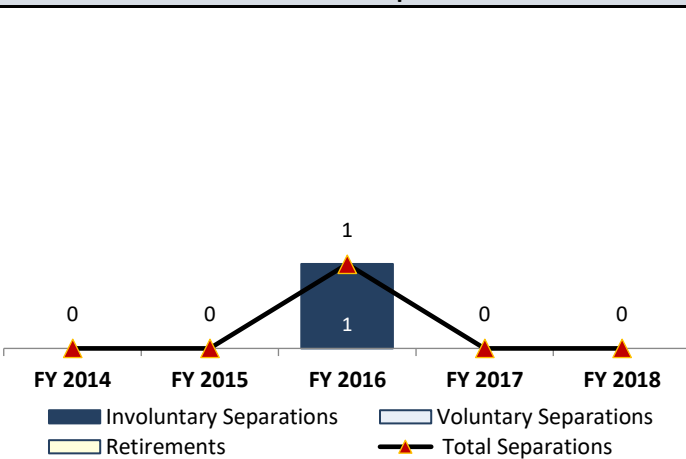
Employee Turnover ^a

In fiscal year 2018, the total turnover rate for the institution was 9.1 percent. This was lower than in fiscal year 2017, when the total turnover rate was 10.1 percent. The turnover rate in fiscal year 2018 for administrators (0.0 percent) was the same as fiscal year 2017, and turnover for staff positions (9.2 percent) was lower than in fiscal year 2017.

Turnover Rates



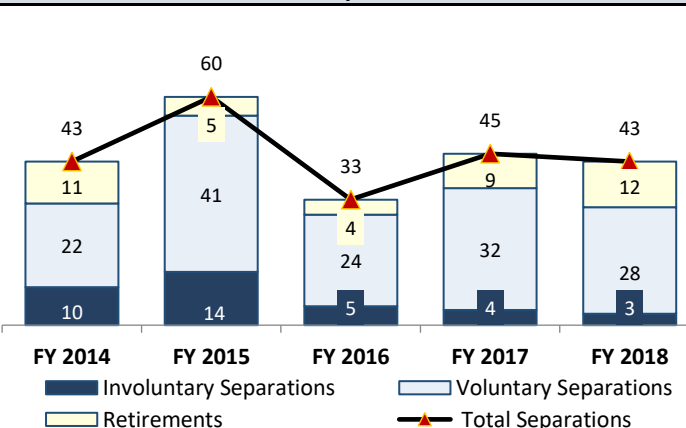
Administrator Separations



Faculty Separations

The Texas A&M Engineering Extension Service Does Not Employ Faculty Positions

Staff Separations



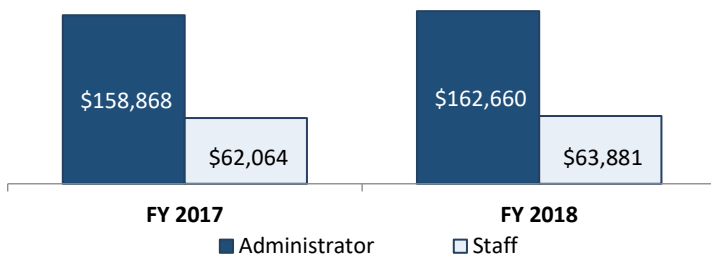
^a Turnover information is self-reported by the institution. Administrator positions include officials holding titles such as president, vice president, chancellor, associate chancellor, assistant chancellor, dean, associate dean, assistant dean, and positions with similar responsibilities. Staff positions include only non-faculty employees who worked at least 20 hours per week for at least 4.5 months.

Compensation Information ^b

Compared to the average salaries in fiscal year 2017, the average salary for staff employees increased by 2.9 percent and for administrators it increased by 2.4 percent. Compared to fiscal year 2014, salary and benefits expenditures increased by 26.5 percent.

In fiscal year 2018, the director's salary was \$224,748. This salary increased from fiscal year 2017, when the director's salary was \$224,744.

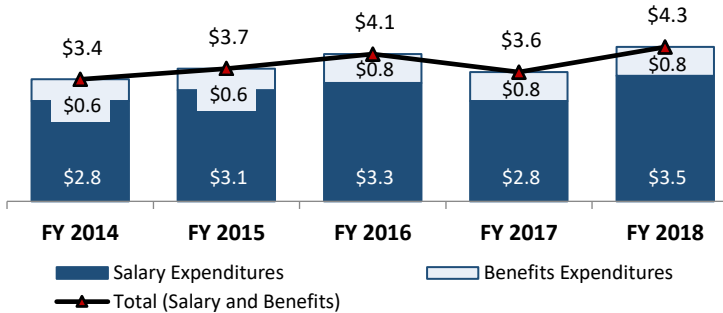
Administrator and Staff Average Salaries



Faculty Average Salary

**The Texas A&M Engineering Extension Service
Does Not Employ Faculty Positions**

Salary and Benefits Expenditures (in Millions) (Includes Only Appropriated Funds)



Number and Dollars Spent on Merit Increases

	Fiscal Year 2017		Fiscal Year 2018	
	Number of Merits	Dollars Spent	Number of Merits	Dollars Spent
Administrator	3	\$ 11,359	2	\$ 6,490
Faculty	Not Applicable			
Staff	263	\$ 54,065	253	\$ 465,124
Totals	266	\$ 65,424	255	\$ 471,614

In fiscal year 2018, the institution used appropriated funds to pay for 100.0 percent of administrator merit increases and 98.0 percent of staff merit increases.

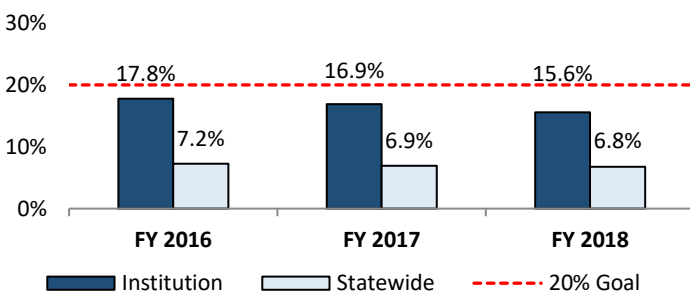
Fiscal Year 2018 Workforce Demographics and Veteran Employment ^{b c}

Of the institution's administrators, 100.0 percent were 40 years of age or older, and of the institution's staff employees, 79.7 percent were 40 years of age or older. The average length of employment at the institution for administrators was 16.8 years, and for staff employees it was 8.9 years.

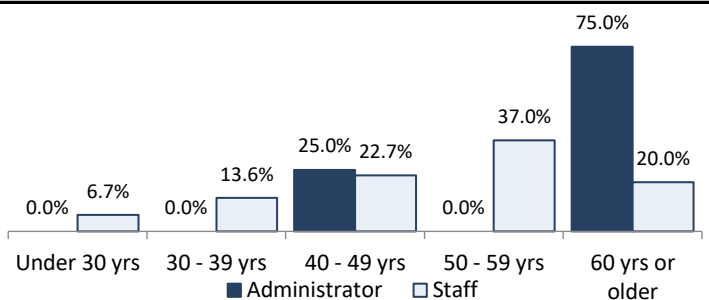
Effective fiscal year 2016, Texas Government Code, Section 657.004, sets for higher education institutions a goal of employing veterans in full-time positions equal to at least 20.0 percent of the total number of institution employees.

In fiscal year 2018, the institution's total percent of veterans employed was higher than the statewide average and had decreased since fiscal year 2017.

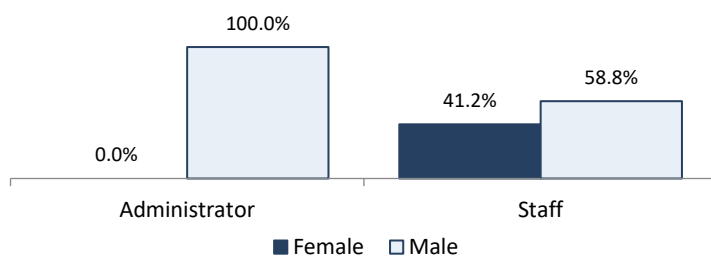
Veteran Employment



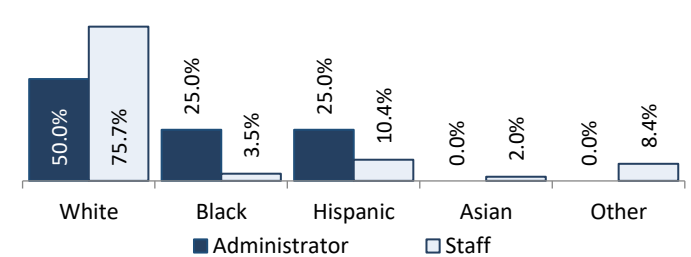
Age: Administrator and Staff



Gender: Administrator and Staff



Ethnicity: Administrator and Staff



^b Age, gender, ethnicity, and merit data is self-reported by the institution. Administrator positions include officials holding titles such as president, vice president, chancellor, associate or assistant chancellor, dean, associate or assistant dean, and positions with similar responsibilities. Staff positions include only non-faculty employees who worked at least 20 hours per week for at least 4.5 months.

^c Information on veteran employment was obtained from the Office of the Comptroller of Public Accounts. Statewide totals include state agencies and higher education institutions.