

712 - Texas A&M Engineering Experiment Station

Workforce Summary Document Prepared by the State Auditor's Office.

Based on a review of information self-reported by the institution, the following items are noteworthy.

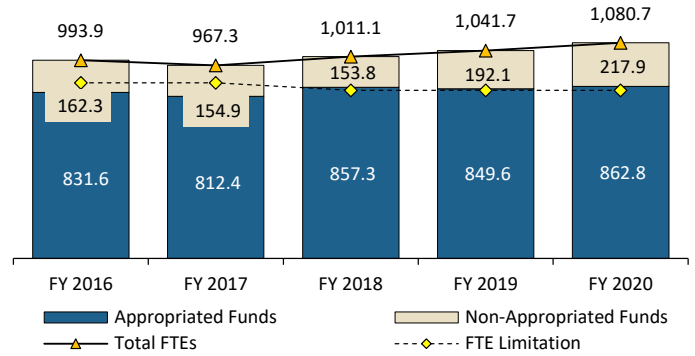
Full-Time Equivalent (FTE) Employees

The institution's full-time equivalent (FTE) employee limitation remained the same in fiscal year 2020 compared with fiscal year 2019. As of August 31, 2020, 9.0 FTEs were administrator positions. The institution's 1,080.7 total FTEs represents an increase of 86.8 (8.7 percent) in the total number of FTEs since fiscal year 2016.

In fiscal year 2020, 20.2 percent of FTEs were paid from non-appropriated funds. This was an increase of 34.3 percent in FTEs paid from non-appropriated funds since fiscal year 2016. Only FTEs paid from appropriated funds counted toward the FTE limitation.

FTEs Below/Above FTE Limitation

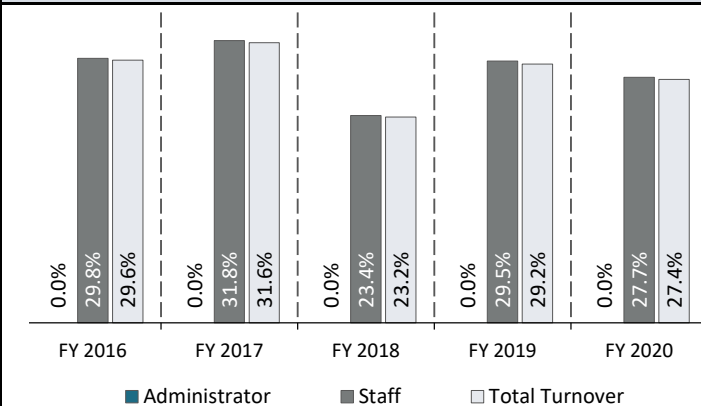
	FY 2016	FY 2017	FY 2018	FY 2019	FY 2020
FTE Limitation	880.0	880.0	842.4	842.4	842.4
Number Below or Above Limitation	-48.4	-67.6	+14.9	+7.2	+20.4
Percent Below or Above Limitation	-5.5%	-7.7%	+1.8%	+0.9%	+2.4%



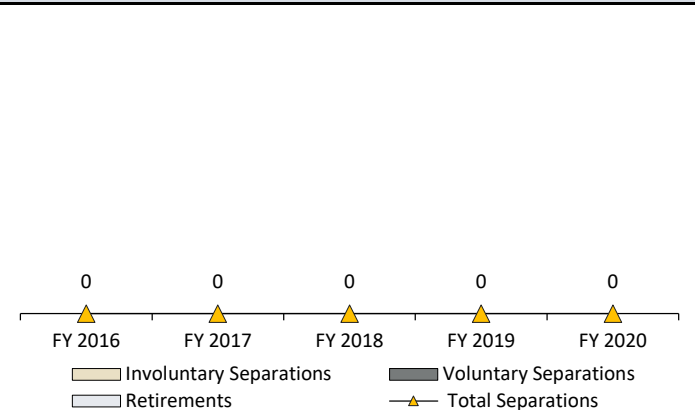
Employee Turnover^a

In fiscal year 2020, the total turnover rate for the institution was 27.4 percent. This was lower than in fiscal year 2019, when the total turnover rate was 29.2 percent. The turnover rate in fiscal year 2020 for administrators (0.0 percent) was the same as fiscal year 2019 and turnover for staff positions (27.7 percent) was lower than in fiscal year 2019.

Turnover Rates



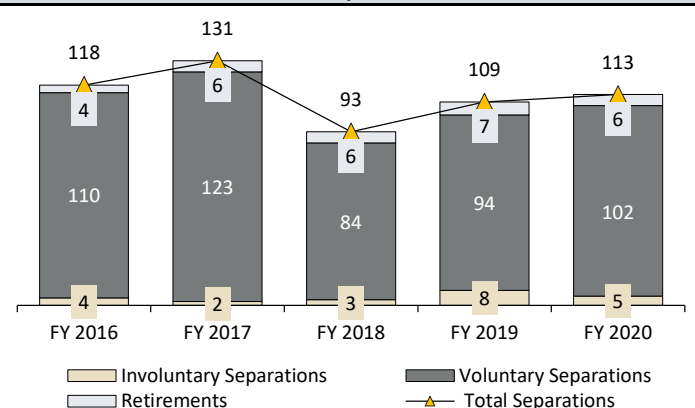
Administrator Separations



Faculty Separations

The Texas A&M Engineering Experiment Station Does Not Employ Faculty Positions

Staff Separations



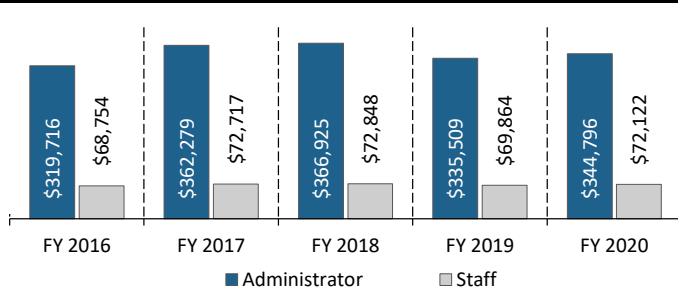
^a Turnover information was self-reported by the institution. Administrator positions include officials holding titles such as president, vice president, chancellor, associate chancellor, assistant chancellor, dean, associate dean, assistant dean, and positions with similar responsibilities. Staff positions include only non-faculty employees who worked at least 20 hours per week for at least 4.5 months.

Compensation Information ^b

Compared with the average salaries in fiscal year 2019, the average salary for staff employees increased by 3.2 percent, and for administrators it increased by 2.8 percent. Compared with fiscal year 2016, salary and benefits expenditures decreased by 3.6 percent.

In fiscal year 2020, the director's salary was \$516,406. This salary increased from fiscal year 2019, when the director's salary was \$505,620.

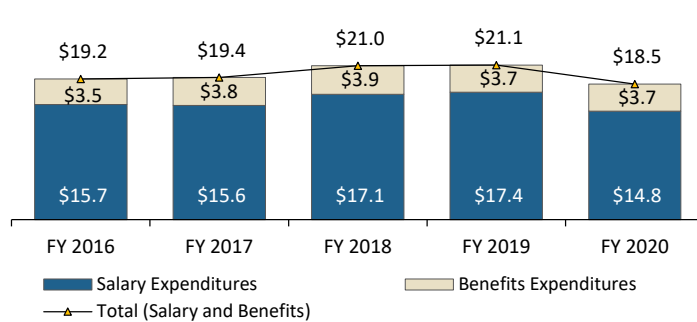
Administrator and Staff Average Salaries



Faculty Average Salary

**The Texas A&M Engineering Experiment Station
Does Not Employ Faculty Positions**

Salary and Benefits Expenditures (in Millions) Includes Only Appropriated Funds



Number and Dollars Spent on Merit Increases

	Fiscal Year 2019		Fiscal Year 2020	
	Number of Merits	Dollars Spent	Number of Merits	Dollars Spent
Administrator	3	\$ 31,478	4	\$ 33,629
Faculty	Not Applicable			
Staff	310	\$ 846,003	311	\$ 680,294
Totals	313	\$ 877,481	315	\$ 713,923

In fiscal year 2020, the institution used appropriated funds to pay for 45.0 percent of administrator merit increases and 25.0 percent of staff merit increases.

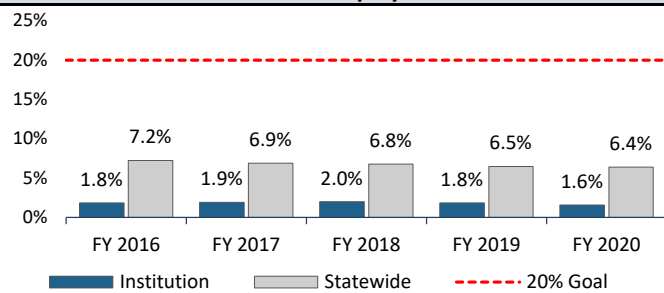
Fiscal Year 2020 Workforce Demographics and Veteran Employment ^{b c}

Of the institution's administrators, 100.0 percent were 40 years old or older, and of the institution's staff employees, 48.4 percent were 40 years old or older. The average length of employment at the institution for administrators was 16.5 years, and for staff employees it was 9.0 years.

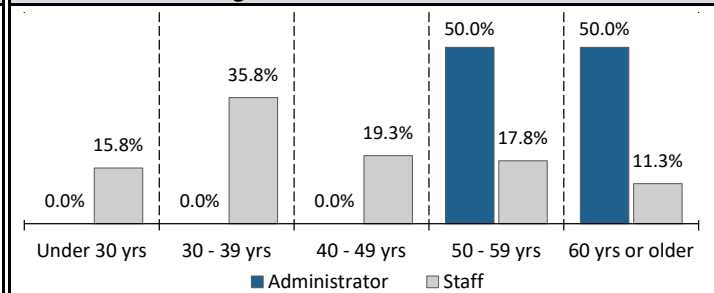
Effective fiscal year 2016, Texas Government Code, Section 657.004, sets for higher education institutions a goal of employing veterans in full-time positions equal to at least 20.0 percent of the total number of institution employees.

In fiscal year 2020, the institution's total percent of veterans employed was lower than the statewide average and had decreased since fiscal year 2019.

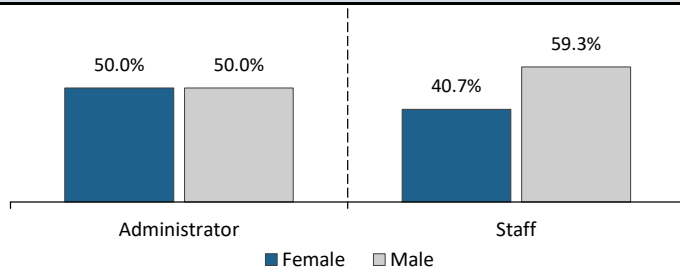
Veteran Employment



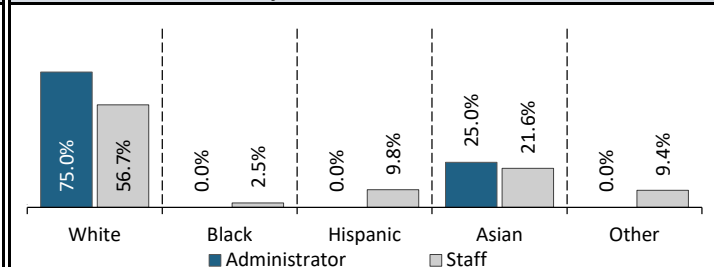
Age: Administrator and Staff



Gender: Administrator and Staff



Ethnicity: Administrator and Staff



^b Age, gender, ethnicity, and merit data was self-reported by the institution. Administrator positions include officials holding titles such as president, vice president, chancellor, associate or assistant chancellor, dean, associate or assistant dean, and positions with similar responsibilities. Staff positions include only non-faculty employees who worked at least 20 hours per week for at least 4.5 months.

^c Veteran employment information was obtained from the Office of the Comptroller of Public Accounts. Statewide totals include state agencies and higher education institutions.