

575 - Texas Division of Emergency Management

Workforce Summary Document Prepared by the State Auditor's Office.

Based on a review of information **self-reported** by the institution, the following items are noteworthy.

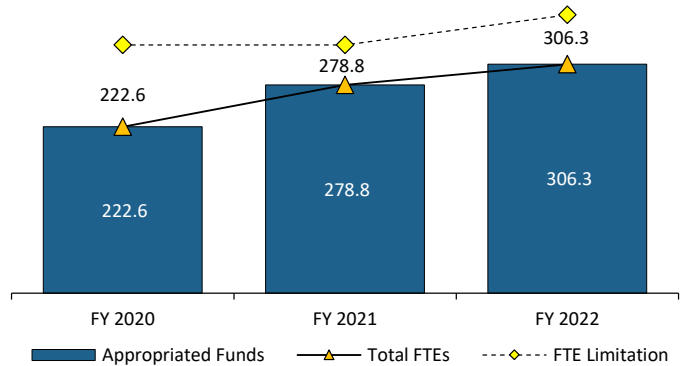
Full-Time Equivalent (FTE) Employees

The institution's full-time equivalent (FTE) employee limitation increased by 12.1 percent to 372.4 FTEs in fiscal year 2022 compared with fiscal year 2021. As of August 31, 2022, 5.0 FTEs were administrator positions. The institution's 306.3 total FTEs represents an increase of 83.7 (37.6 percent) in the total number of FTEs since fiscal year 2020.

This institution was established on September 1, 2019. Senate Bill 799 (86th Legislature, Regular Session) created the institution under the Texas A&M University System. Prior to fiscal year 2020, information on full-time equivalent employees was included in the information reported for the Department of Public Safety.

FTEs Below/Above FTE Limitation

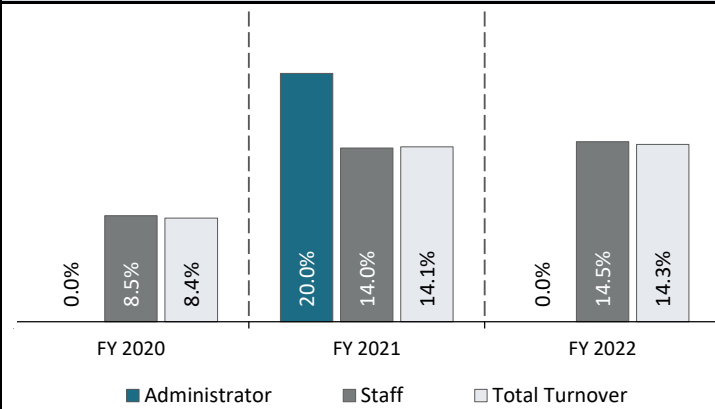
	FY 2018	FY 2019	FY 2020	FY 2021	FY 2022
FTE Limitation	N/A	N/A	332.2	332.2	372.4
Number Below or Above Limitation	N/A	N/A	-109.6	-53.4	-66.1
Percent Below or Above Limitation	N/A	N/A	-33.0%	-16.1%	-17.7%



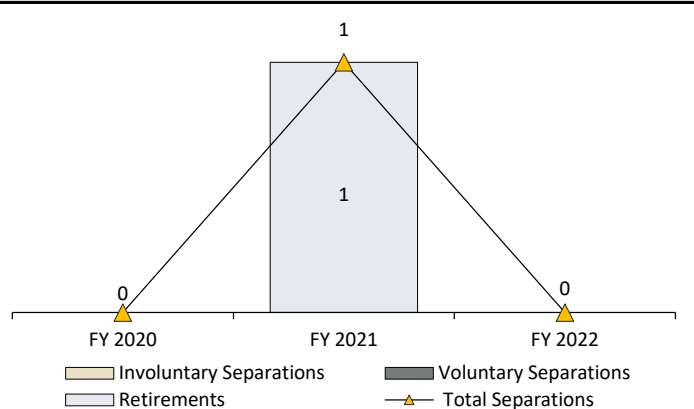
Employee Turnover^a

In fiscal year 2022, the total turnover rate for the institution was 14.3 percent. This was higher than in fiscal year 2021, when the total turnover rate was 14.1 percent. The turnover rate in fiscal year 2022 for administrators (0.0 percent) was lower than in fiscal year 2021, and turnover for staff positions (14.5 percent) was higher than in fiscal year 2021.

Turnover Rates



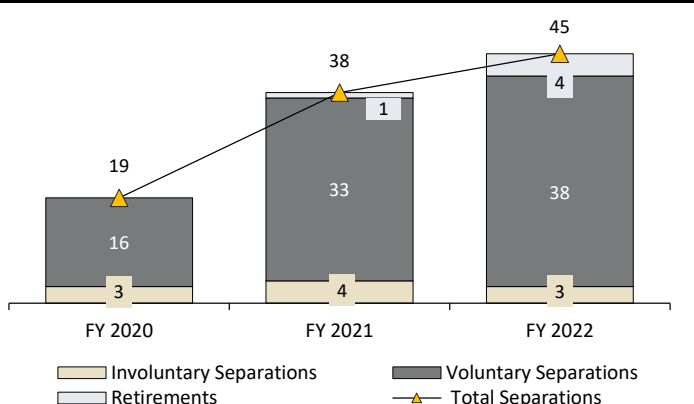
Administrator Separations



Faculty Separations

The Texas Division of Emergency Management Does Not Employ Faculty Positions

Staff Separations



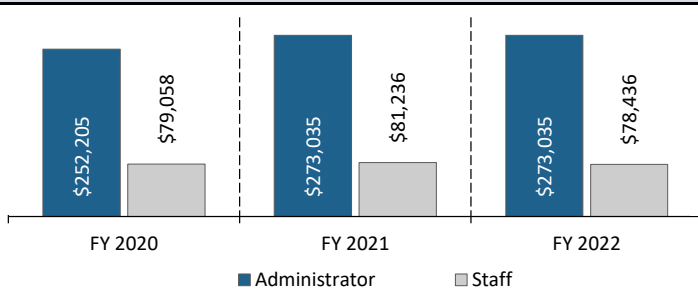
^a Turnover information was self-reported by the institution. Administrator positions include officials holding titles such as president, vice president, chancellor, associate chancellor, assistant chancellor, dean, associate dean, assistant dean, and positions with similar responsibilities. Staff positions include only non-faculty employees who worked at least 20 hours per week for at least 4.5 months.

Compensation Information ^b

Compared with the average salaries in fiscal year 2021, the average salary for staff employees decreased by 3.4 percent, and for administrators it was unchanged. Compared with fiscal year 2020, salary and benefits expenditures increased by 48.8 percent. Prior to fiscal year 2020, salary and benefits expenditures were reported with the Department of Public Safety.

In fiscal year 2022, the salary for the Chief of Texas Division of Emergency Management and Vice Chancellor of Disaster and Emergency Services was \$495,000. This salary was unchanged from fiscal year 2021, when the salary was \$495,000.

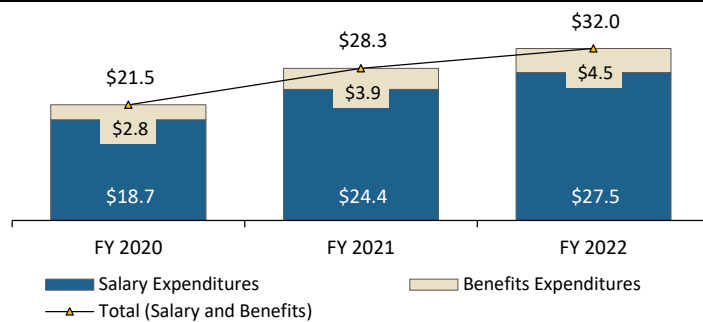
Administrator and Staff Average Salaries



Faculty Average Salary

The Texas Division of Emergency Management Does Not Employ Faculty Positions

Salary and Benefits Expenditures (in Millions) Includes Only Appropriated Funds



Number of Merit Increases

	FY 2018	FY 2019	FY 2020	FY 2021	FY 2022
Administrator	NA	NA	1	7	5
Faculty	Not Applicable				
Staff	NA	NA	0	176	232
Totals	NA	NA	1	183	237

In fiscal year 2022, the institution used appropriated funds to pay for 100.0 percent of the administrator and staff merit increases.

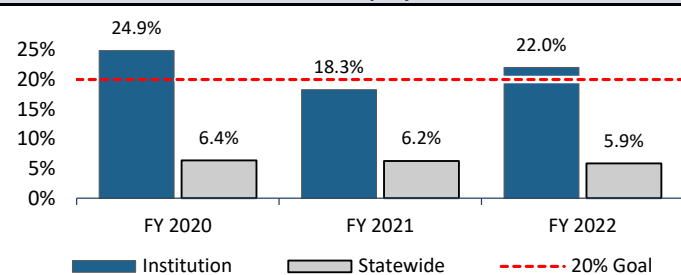
Fiscal Year 2022 Workforce Demographics and Veteran Employment ^{b c}

Of the institution's administrators, 100.0 percent were 40 years of age or older, and of the institution's staff employees, 68.4 percent were 40 years of age or older. The average length of employment at the institution for administrators was 2.7 years, and for staff employees it was 2.6 years.

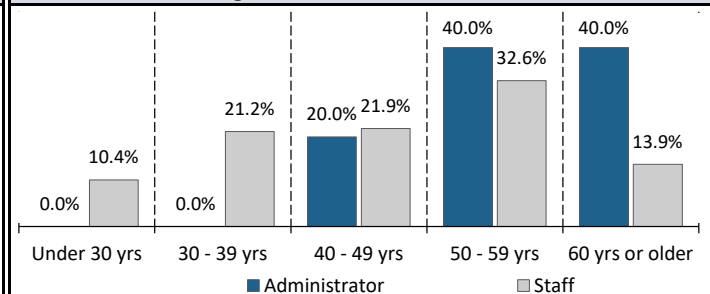
Effective fiscal year 2016, Texas Government Code, Section 657.004, sets for higher education institutions a goal of employing veterans in full-time positions equal to at least 20.0 percent of the total number of institution employees.

In fiscal year 2022, the institution's total percent of veterans employed was higher than the statewide average and had increased since fiscal year 2021.

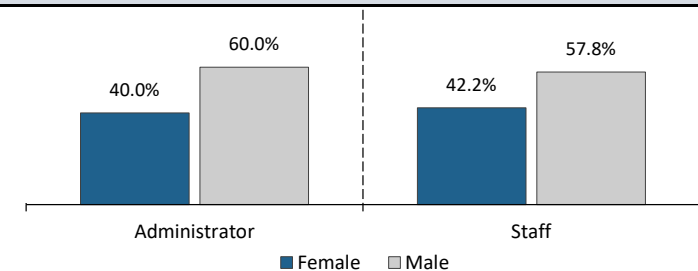
Veteran Employment



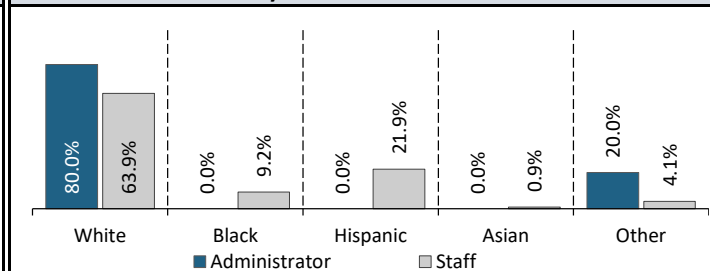
Age: Administrator and Staff



Gender: Administrator and Staff



Ethnicity: Administrator and Staff



^b Age, gender, ethnicity, and merit data was self-reported by the institution. Administrator positions include officials holding titles such as president, vice president, chancellor, associate or assistant chancellor, dean, associate or assistant dean, and positions with similar responsibilities. Staff positions include only non-faculty employees who worked at least 20 hours per week for at least 4.5 months.

^c Veteran employment information was obtained from the Office of the Comptroller of Public Accounts. Statewide totals include state agencies and higher education institutions.