

719 - Texas State Technical College System

Workforce Summary Document Prepared by the State Auditor's Office.

Based on a review of information self-reported by the institution, the following items are noteworthy.

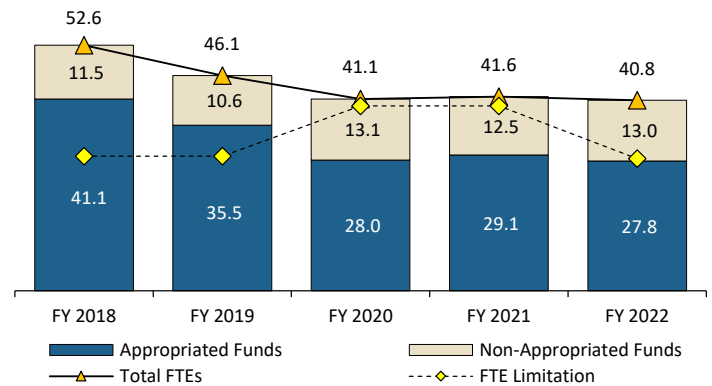
Full-Time Equivalent (FTE) Employees

The institution's full-time equivalent (FTE) employee limitation decreased by 28.5 percent to 28.3 FTEs in fiscal year 2022 compared with fiscal year 2021. As of August 31, 2022, 15.8 FTEs were administrator positions. The institution's 40.8 total FTEs represents a decrease of 11.8 (22.4 percent) in the total number of FTEs since fiscal year 2018.

In fiscal year 2022, 31.9 percent of FTEs were paid from non-appropriated funds. This was an increase of 13.0 percent in FTEs paid from non-appropriated funds since fiscal year 2018. Only FTEs paid from appropriated funds counted toward the FTE limitation.

FTEs Below/Above FTE Limitation

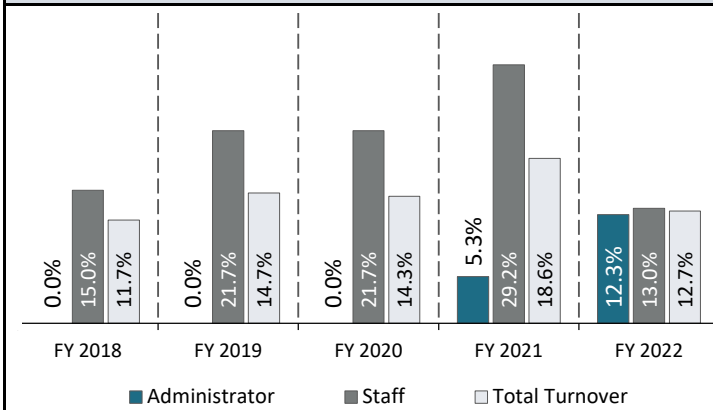
	FY 2018	FY 2019	FY 2020	FY 2021	FY 2022
FTE Limitation	28.8	28.8	39.6	39.6	28.3
Number Below or Above Limitation	+12.3	+6.7	-11.6	-10.5	-0.5
Percent Below or Above Limitation	+42.7%	+23.3%	-29.3%	-26.5%	-1.8%



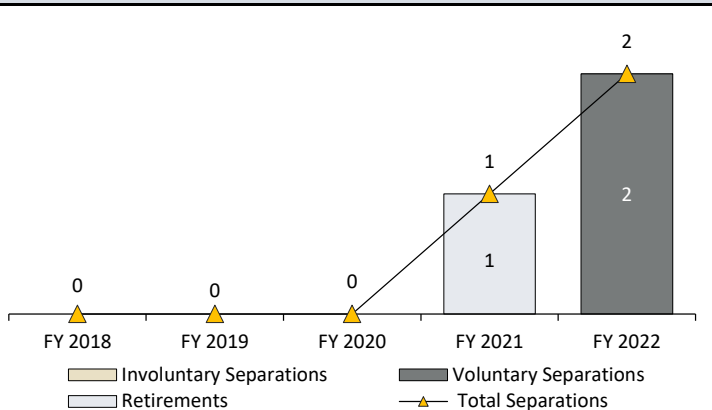
Employee Turnover^a

In fiscal year 2022, the total turnover rate for the institution was 12.7 percent. This was lower than in fiscal year 2021, when the total turnover rate was 18.6 percent. The turnover rate in fiscal year 2022 for administrators (12.3 percent) was higher than in fiscal year 2021, and turnover for staff positions (13.0 percent) was lower than in fiscal year 2021.

Turnover Rates



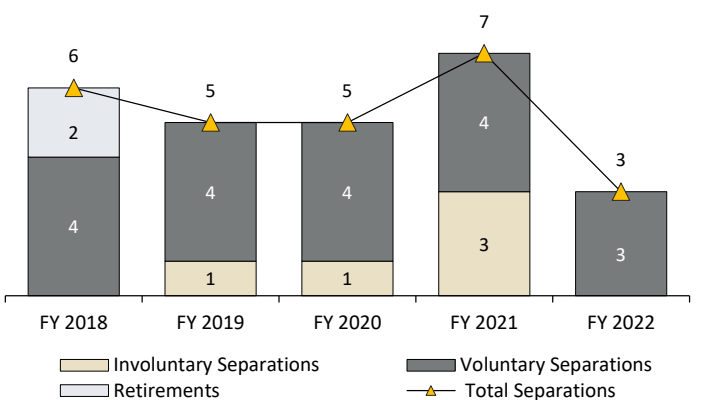
Administrator Separations



Faculty Separations

The Texas State Technical College System Administration Office Does Not Employ Faculty Positions

Staff Separations



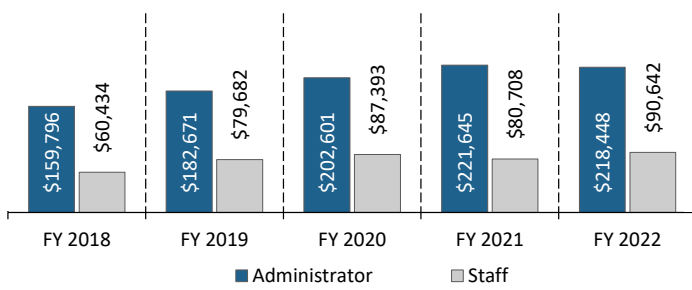
^a Turnover information was self-reported by the institution. Administrator positions include officials holding titles such as president, vice president, chancellor, associate chancellor, assistant chancellor, dean, associate dean, assistant dean, and positions with similar responsibilities. Staff positions include only non-faculty employees who worked at least 20 hours per week for at least 4.5 months.

Compensation Information

Compared with the average salaries in fiscal year 2021, the average salary for staff employees increased by 12.3 percent, and for administrators it decreased by 1.4 percent. Compared with fiscal year 2018, salary and benefits expenditures increased by 22.0 percent.

There is a single administration and chief executive across the Texas State Technical College System. In fiscal year 2022, the head chancellor's salary for this college was \$490,000. This salary was unchanged from fiscal year 2021, when the head chancellor's salary was \$490,000.

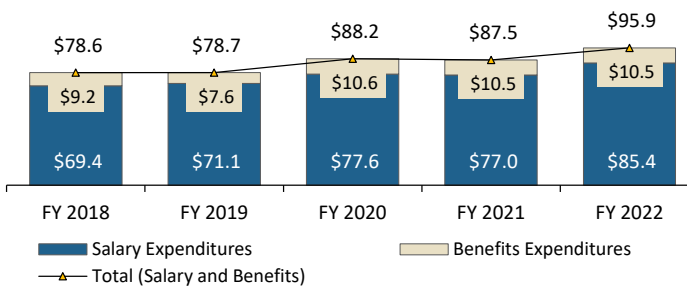
Administrator and Staff Average Salaries



Faculty Average Salary

The Texas State Technical College System Administration Office Does Not Employ Faculty Positions

Salary and Benefits Expenditures (in Millions)^b Includes Only Appropriated Funds



Number of Merit Increases

	FY 2018	FY 2019	FY 2020	FY 2021	FY 2022
Administrator	2	5	8	16	16
Faculty	Not Applicable				
Staff	9	1	14	18	27
Totals	11	6	22	34	43

In fiscal year 2022, the institution used appropriated funds to pay for 100.0 percent of administrator merit increases, and 52.0 percent of staff merit increases.

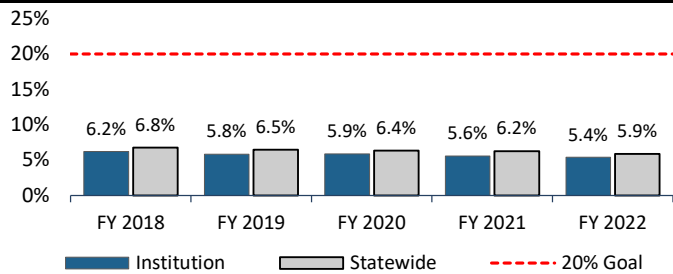
Fiscal Year 2022 Workforce Demographics and Veteran Employment^{c d}

Of the institution's administrators, 100.0 percent were 40 years of age or older, and of the institution's staff employees, 33.3 percent were 40 years of age or older. The average length of employment at the institution for administrators was 16.3 years, and for staff employees it was 4.9 years.

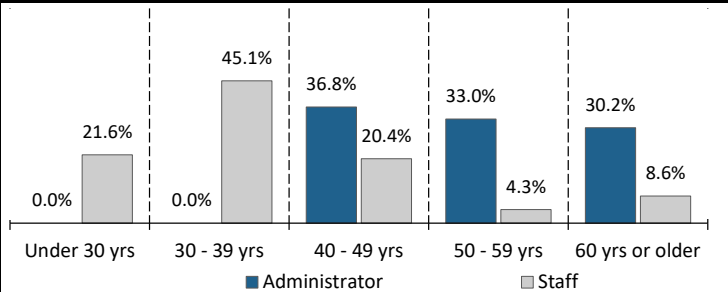
Effective fiscal year 2016, Texas Government Code, Section 657.004, sets for higher education institutions a goal of employing veterans in full-time positions equal to at least 20.0 percent of the total number of institution employees.

In fiscal year 2022, the institution's total percent of veterans employed was lower than the statewide average and had decreased since fiscal year 2021.

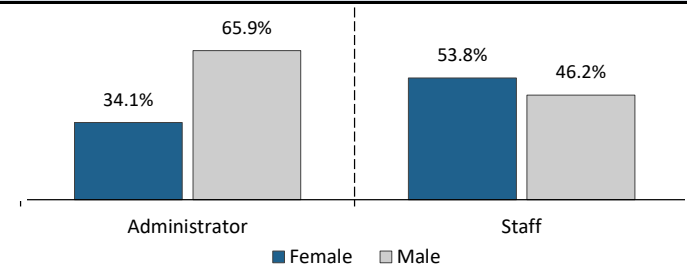
Veteran Employment



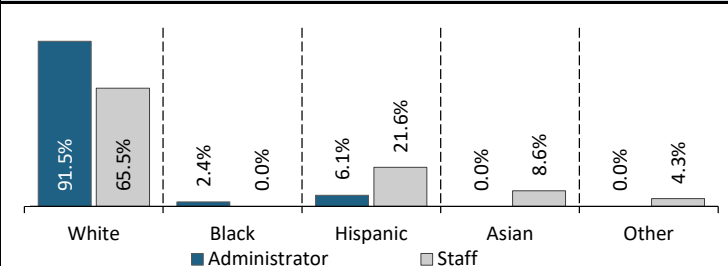
Age: Administrator and Staff



Gender: Administrator and Staff



Ethnicity: Administrator and Staff



^b Salary and benefits expenditures for the Texas State Technical College System includes information reported from all Texas State Technical College campuses.

^c Age, gender, ethnicity, and merit data was self-reported by the institution. Administrator positions include officials holding titles such as president, vice president, chancellor, associate or assistant chancellor, dean, associate or assistant dean, and positions with similar responsibilities. Staff positions include only non-faculty employees who worked at least 20 hours per week for at least 4.5 months.

^d Veteran employment information was obtained from the Office of the Comptroller of Public Accounts. Veteran employment for the Texas State Technical College System includes information reported from all Texas State Technical College campuses. Statewide totals include state agencies and higher education institutions.