

# 575 - Texas Division of Emergency Management

Workforce Summary Document Prepared by the State Auditor's Office.

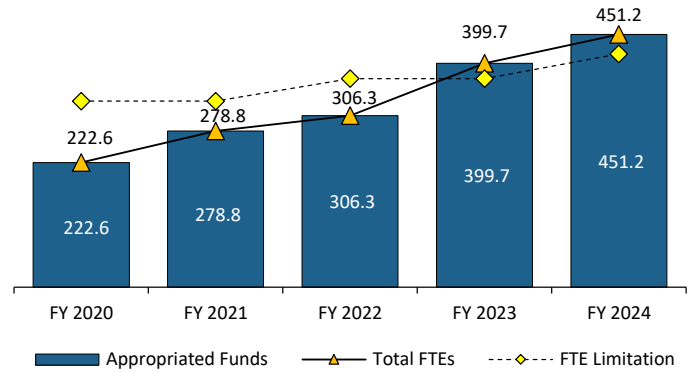
Based on a review of information self-reported by the institution, the following items are noteworthy.

## Full-Time Equivalent (FTE) Employees

The institution's full-time equivalent (FTE) employee limitation increased by 11.8 percent to 416.4 FTEs in fiscal year 2024 compared with fiscal year 2023. As of August 31, 2024, 7.0 FTEs were administrator positions. The institution's 451.2 total FTEs represents an increase of 228.6 (102.7 percent) in the total number of FTEs since fiscal year 2020.

### FTEs Below/Above FTE Limitation

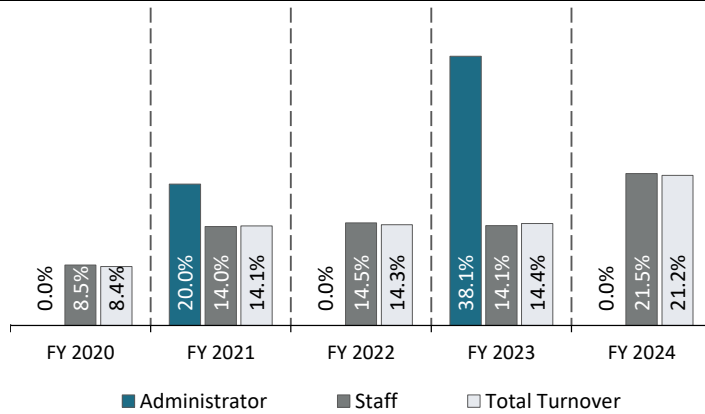
	FY 2020	FY 2021	FY 2022	FY 2023	FY 2024
FTE Limitation	332.2	332.2	372.4	372.4	416.4
Number Below or Above Limitation	-109.6	-53.4	-66.1	+27.3	+34.8
Percent Below or Above Limitation	-33.0%	-16.1%	-17.7%	+7.3%	+8.4%



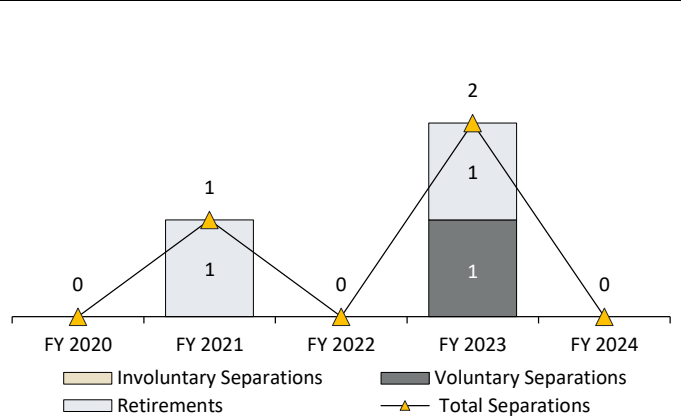
## Employee Turnover<sup>a</sup>

In fiscal year 2024, the total turnover rate for the institution was 21.2 percent. This was higher than in fiscal year 2023, when the total turnover rate was 14.4 percent. The turnover rate in fiscal year 2024 for administrators (0.0 percent) was lower than in fiscal year 2023, and turnover for staff positions (21.5 percent) was higher than in fiscal year 2023.

### Turnover Rates



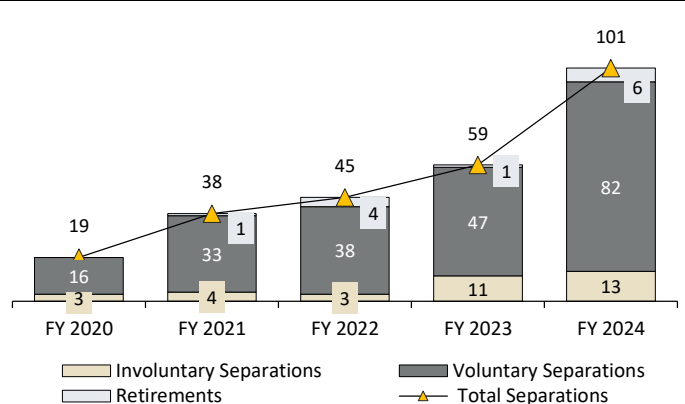
### Administrator Separations



### Faculty Separations

**The Texas Division of Emergency Management Does Not Employ Faculty Positions**

### Staff Separations



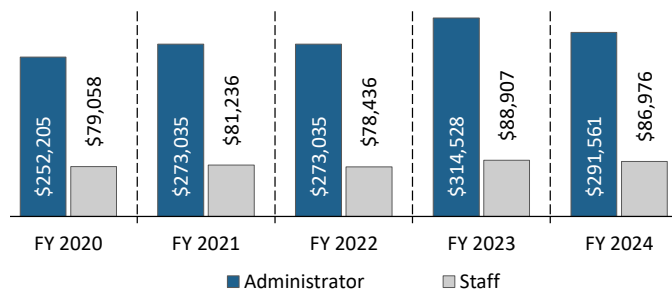
<sup>a</sup> Turnover information was self-reported by the institution. Administrator positions include officials holding titles such as president, vice president, chancellor, associate chancellor, assistant chancellor, dean, associate dean, assistant dean, and positions with similar responsibilities. Administrator and staff positions include all employees regardless of longevity or benefits eligibility.

## Compensation Information <sup>b</sup>

Compared with the average salaries in fiscal year 2023, the average salary for staff employees decreased by 2.2 percent, and for administrators it decreased by 7.3 percent. Compared with fiscal year 2020, salary and benefits expenditures increased by 135.3 percent.

In fiscal year 2024, the salary for the Chief of Texas Division of Emergency Management and Vice Chancellor of Disaster and Emergency Services was \$573,024. This salary increased from fiscal year 2023, when the salary was \$524,081.

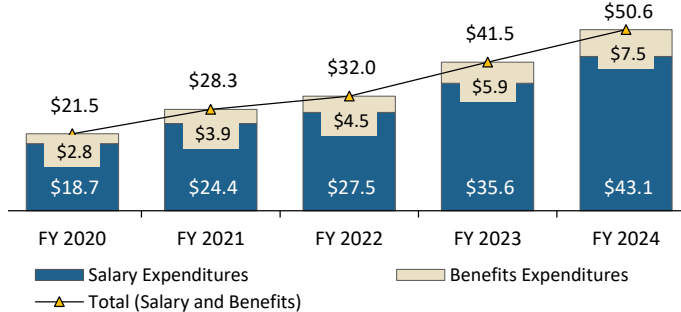
### Administrator and Staff Average Salaries



### Faculty Average Salary

**The Texas Division of Emergency Management  
Does Not Employ Faculty Positions**

### Salary and Benefits Expenditures (in Millions) Includes Only Appropriated Funds



### Number of Merit Increases

	FY 2020	FY 2021	FY 2022	FY 2023	FY 2024
Administrator	1	7	5	3	7
Faculty	Not Applicable				
Staff	0	176	232	285	344
<b>Totals</b>	<b>1</b>	<b>183</b>	<b>237</b>	<b>288</b>	<b>351</b>

In fiscal year 2024, the institution used appropriated funds to pay for 99.0 percent of administrator merit increases and 99.0 percent of staff merit increases.

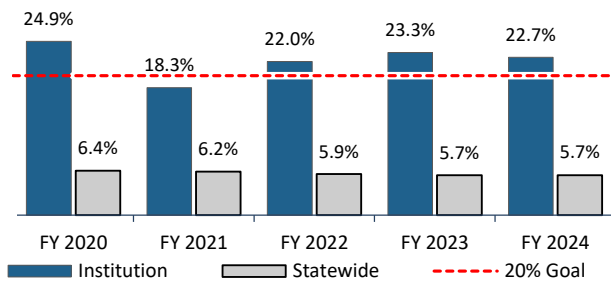
## Fiscal Year 2024 Workforce Demographics and Veteran Employment <sup>b c</sup>

Of the institution's administrators, 77.3 percent were 40 years of age or older, and of the institution's staff employees, 61.7 percent were 40 years of age or older. The average length of employment at the institution for administrators was 3.6 years, and for staff employees it was 2.5 years.

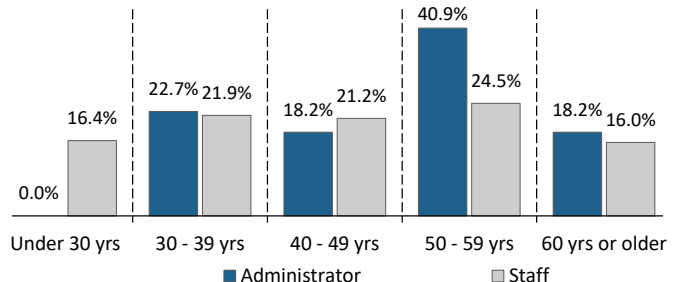
Effective fiscal year 2016, Texas Government Code, Section 657.004, sets for higher education institutions a goal of employing veterans in full-time positions equal to at least 20.0 percent of the total number of institution employees.

In fiscal year 2024, the institution's total percent of veterans employed was higher than the statewide average and had decreased since fiscal year 2023.

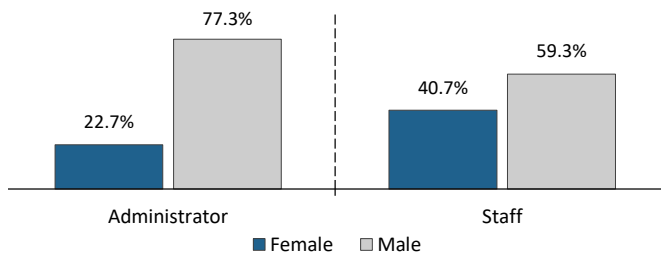
### Veteran Employment



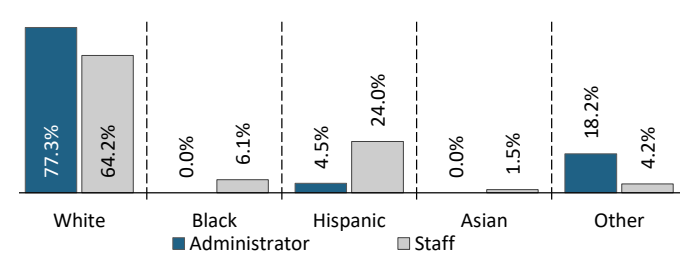
### Age: Administrator and Staff



### Gender: Administrator and Staff



### Ethnicity: Administrator and Staff



<sup>b</sup> Age, gender, ethnicity, and merit data was self-reported by the institution. Administrator positions include officials holding titles such as president, vice president, chancellor, associate or assistant chancellor, dean, associate or assistant dean, and positions with similar responsibilities. Administrator and staff positions include all employees regardless of longevity or benefits eligibility.

<sup>c</sup> Veteran employment information was obtained from the Office of the Comptroller of Public Accounts. Statewide totals include state agencies and higher education institutions.