

# 758 - Texas State University System

Workforce Summary Document Prepared by the State Auditor's Office.

Based on a review of information **self-reported** by the institution, the following items are noteworthy.

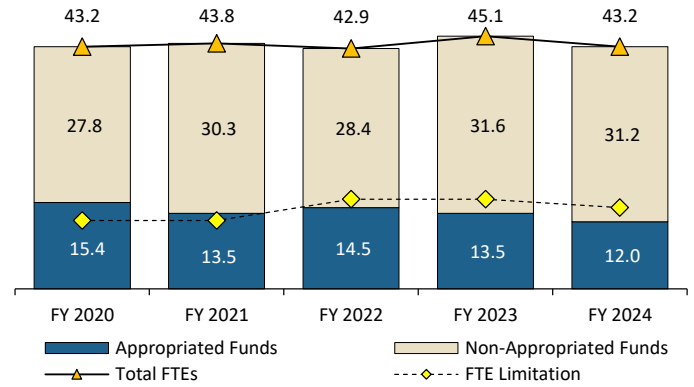
## Full-Time Equivalent (FTE) Employees

The institution's full-time equivalent (FTE) employee limitation decreased by 9.4 percent to 14.5 FTEs in fiscal year 2024 compared with fiscal year 2023. As of August 31, 2024, 24.0 FTEs were administrator positions. The institution's 43.2 total FTEs saw no change (0 percent) in the total number of FTEs since fiscal year 2020.

In fiscal year 2024, 72.2 percent of FTEs were paid from non-appropriated funds. This was an increase of 12.2 percent in FTEs paid from non-appropriated funds since fiscal year 2020. Only FTEs paid from appropriated funds counted toward the FTE limitation.

### FTEs Below/Above FTE Limitation

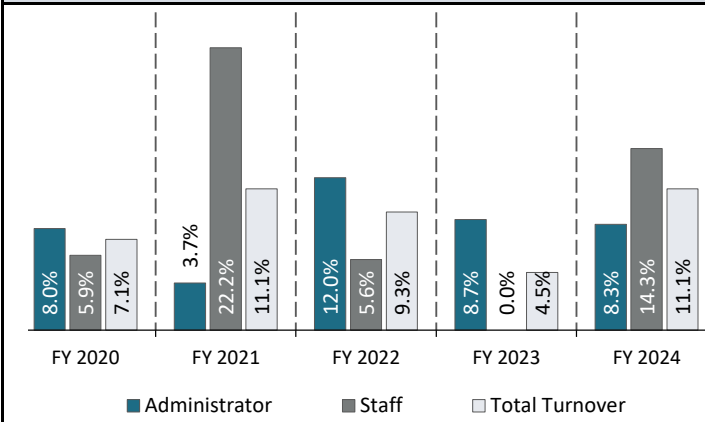
|                                   | FY 2020 | FY 2021 | FY 2022 | FY 2023 | FY 2024 |
|-----------------------------------|---------|---------|---------|---------|---------|
| FTE Limitation                    | 12.2    | 12.2    | 16.0    | 16.0    | 14.5    |
| Number Below or Above Limitation  | +3.2    | +1.3    | -1.5    | -2.5    | -2.5    |
| Percent Below or Above Limitation | +26.2%  | +10.7%  | -9.4%   | -15.6%  | -17.2%  |



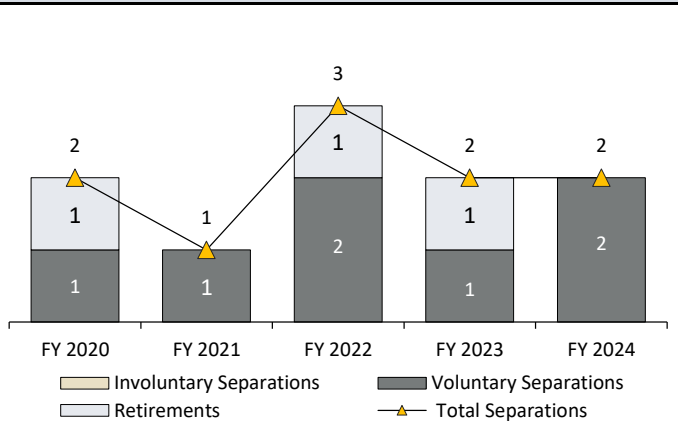
## Employee Turnover <sup>a</sup>

In fiscal year 2024, the total turnover rate for the institution was 11.1 percent. This was higher than in fiscal year 2023, when the total turnover rate was 4.5 percent. The turnover rate in fiscal year 2024 for administrators (8.3 percent) was lower than in fiscal year 2023, and turnover for staff positions (14.3 percent) was higher than in fiscal year 2023.

### Turnover Rates



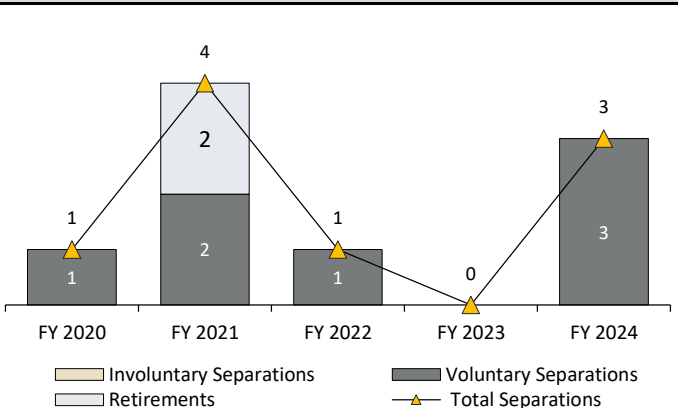
### Administrator Separations



### Faculty Separations

**The Texas State University System Office  
Does Not Employ Faculty Positions**

### Staff Separations



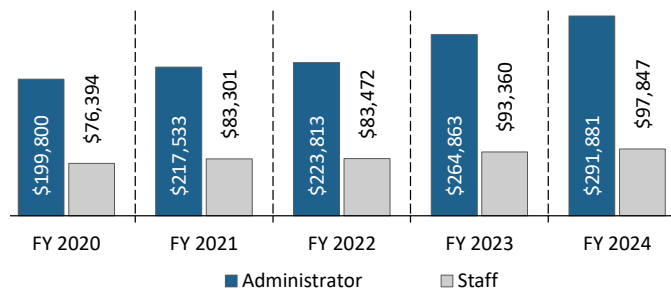
<sup>a</sup> Turnover information was self-reported by the institution. Administrator positions include officials holding titles such as president, vice president, chancellor, associate chancellor, assistant chancellor, dean, associate dean, assistant dean, and positions with similar responsibilities. Staff positions include only non-faculty employees who worked at least 20 hours per week for at least 4.5 months.

## Compensation Information <sup>b</sup>

Compared with the average salaries in fiscal year 2023, the average salary for staff employees increased by 4.8 percent, and for administrators it increased by 10.2 percent. Compared with fiscal year 2020, salary and benefits expenditures decreased by 6.7 percent.

In fiscal year 2024, the chancellor's salary was \$1,139,046. This salary increased from fiscal year 2023, when the chancellor's salary was \$1,009,290.

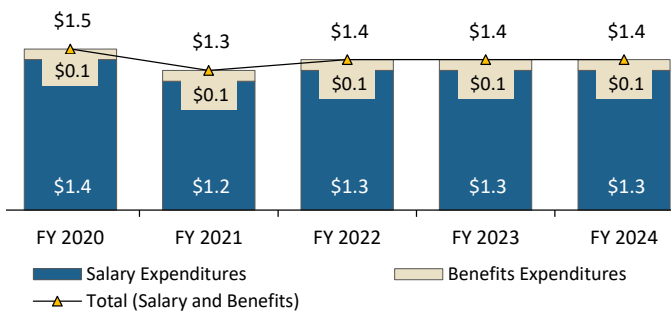
### Administrator and Staff Average Salaries



### Faculty Average Salary

**The Texas State University System Office  
Does Not Employ Faculty Positions**

### Salary and Benefits Expenditures (in Millions) Includes Only Appropriated Funds



### Number of Merit Increases

|               | FY 2020        | FY 2021   | FY 2022   | FY 2023   | FY 2024   |
|---------------|----------------|-----------|-----------|-----------|-----------|
| Administrator | 25             | 27        | 17        | 22        | 19        |
| Faculty       | Not Applicable |           |           |           |           |
| Staff         | 18             | 14        | 12        | 15        | 13        |
| <b>Totals</b> | <b>43</b>      | <b>41</b> | <b>29</b> | <b>37</b> | <b>32</b> |

In fiscal year 2024, the institution used appropriated funds to pay for 10.5 percent of administrator merit increases and 69.2 percent of staff merit increases.

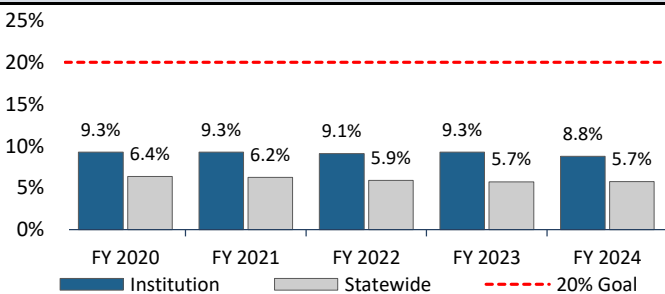
## Fiscal Year 2024 Workforce Demographics and Veteran Employment <sup>b c</sup>

Of the institution's administrators, 83.3 percent were 40 years of age or older, and of the institution's staff employees, 85.7 percent were 40 years of age or older. The average length of employment at the institution for administrators was 8.1 years, and for staff employees it was 5.4 years.

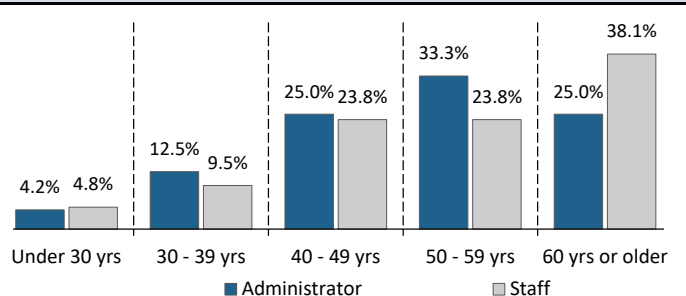
Effective fiscal year 2016, Texas Government Code, Section 657.004, sets for higher education institutions a goal of employing veterans in full-time positions equal to at least 20.0 percent of the total number of institution employees.

In fiscal year 2024, the institution's total percent of veterans employed was higher than the statewide average and had decreased since fiscal year 2023.

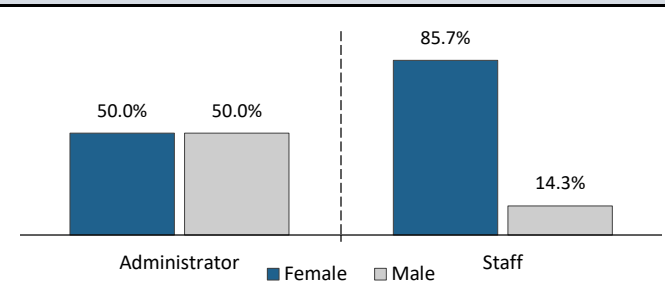
### Veteran Employment



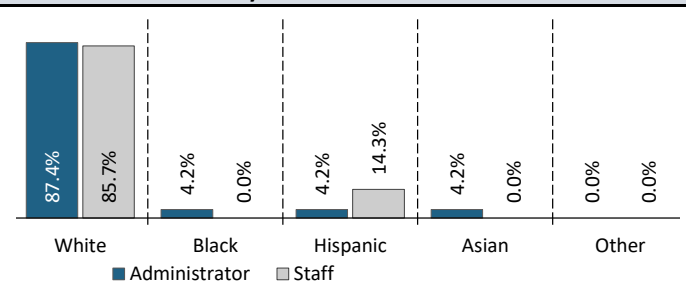
### Age: Administrator and Staff



### Gender: Administrator and Staff



### Ethnicity: Administrator and Staff



<sup>b</sup> Age, gender, ethnicity, and merit data was self-reported by the institution. Administrator positions include officials holding titles such as president, vice president, chancellor, associate or assistant chancellor, dean, associate or assistant dean, and positions with similar responsibilities. Staff positions include only non-faculty employees who worked at least 20 hours per week for at least 4.5 months.

<sup>c</sup> Veteran employment information was obtained from the Office of the Comptroller of Public Accounts. Statewide totals include state agencies and higher education institutions.